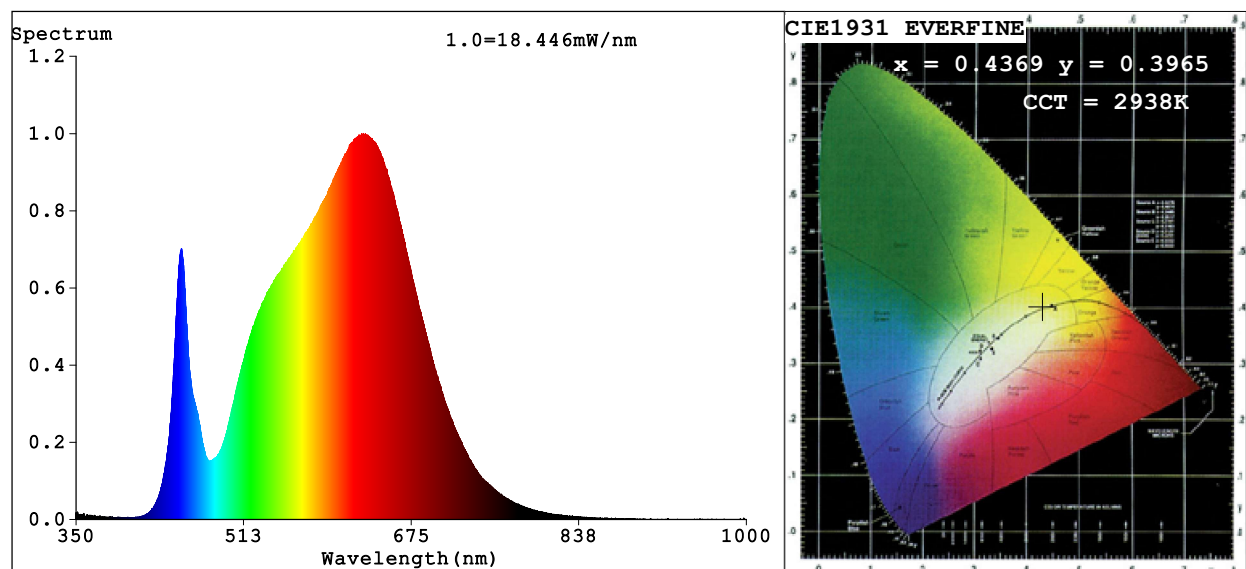


Spectrum Test Report



Color Parameters:

Chromaticity Coordinate: $x=0.4369$ $y=0.3965$ $u'=0.2538$ $v'=0.5184$
CCT=2938K (Duv=-0.0030) Dominant WL:Ld =584.2nm Purity=50.1%
Ratio:R=24.7% G=73.0% B=2.3%; Peak WL:Lp=628.6nm FWHM=165.7nm
Render Index:Ra=91.7 CRI=88.4 TM30:Rf=88 Rg=104 Lav=605.5nm
R1 =93 R2 =94 R3 =92 R4 =91 R5 =91 R6 =91 R7 =93
R8 =87 R9 =69 R10=84 R11=90 R12=73 R13=93 R14=95 R15=92

Photo Parameters:

Flux = 901.7 lm Eff. : 75.09 lm/W Fe = 3.259 W

Electrical parameters:

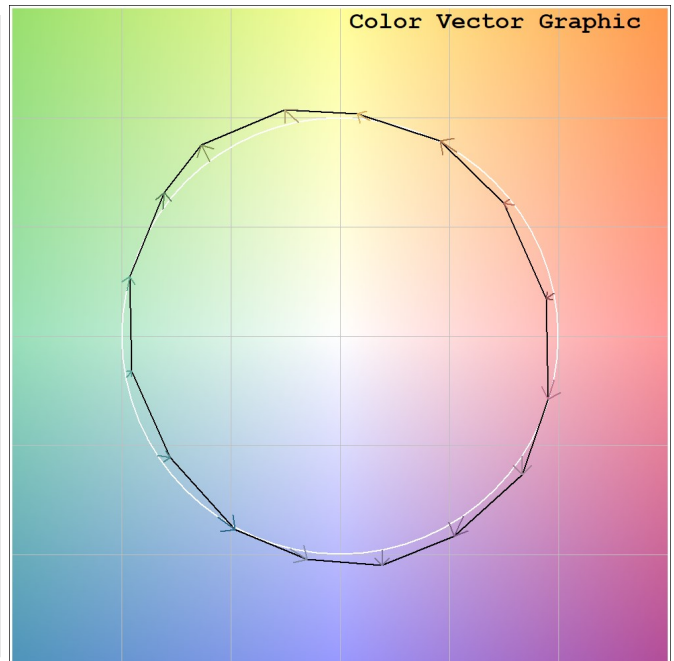
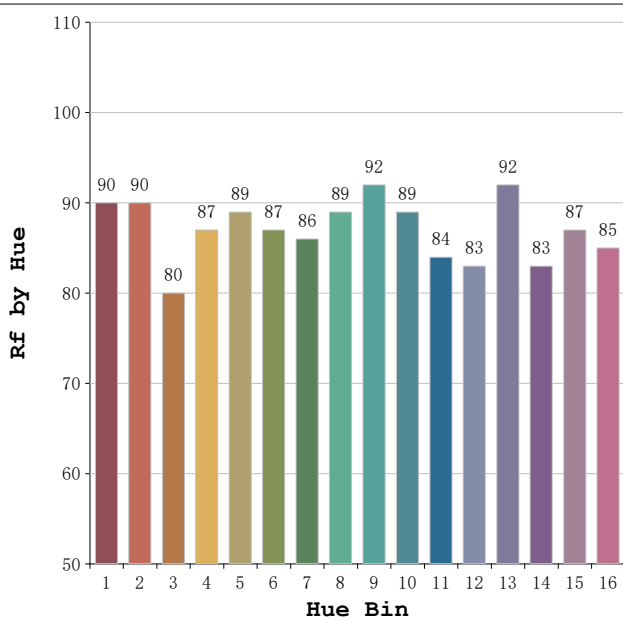
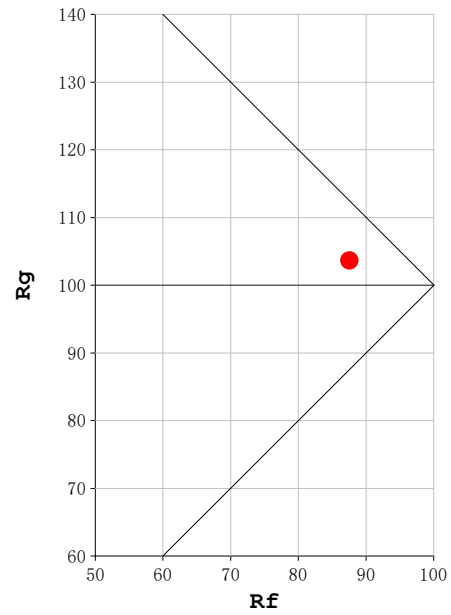
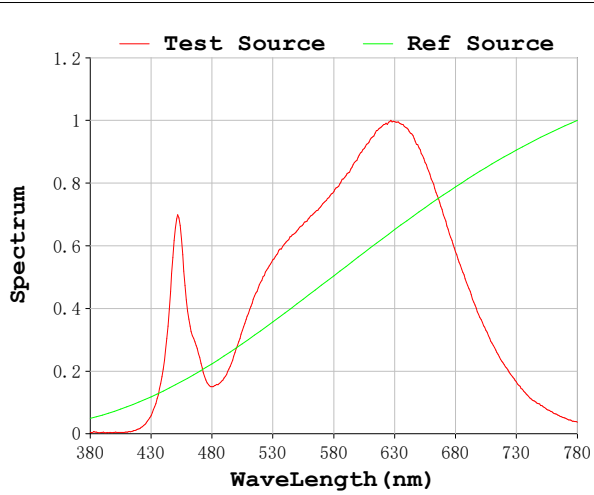
V = 23.998 V I = 0.5004 A P = 12.01 W PF = 1.000

Status: Integral T = 1359 ms Ip = 43318 (66%)

Model:Ecoled Neon 3D 30K
Tester:Sergio Caneros
Temperature:27Deg
Manufacturer:Luz Negra S.L.

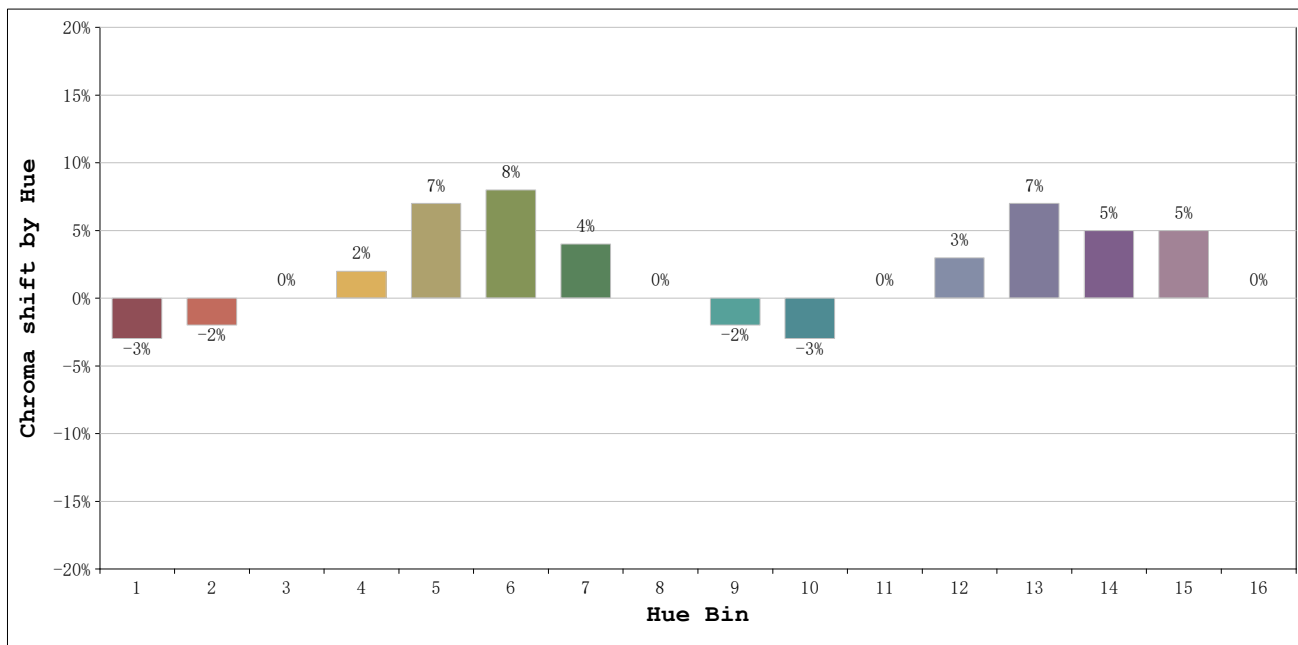
Number: 10.287
Date:2024-11-21 09:59:10
Humidity:35%
Remarks:100cm de Neón

Rf: 88 **CCT: 2938 K** **u': 0.2538**
Rg: 104 **Duv: -0.0030** **v': 0.5184**



Model:Ecoled Neon 3D 30K
 Tester:Sergio Caneros
 Temperature:27Deg
 Manufacturer:Luz Negra S.L.

Number: 10.287
 Date:2024-11-21 09:59:10
 Humidity:35%
 Remarks:100cm de Neón



			Graphic shift(%)	
Hue Bin	Hue Angle	Rf	Chroma	Hue
1	0.0° - 22.5°	90	-3	0
2	22.5° - 45.0°	90	-2	3
3	45.0° - 67.5°	80	0	9
4	67.5° - 90.0°	87	2	6
5	90.0° - 112.5°	89	7	5
6	112.5° - 135.0°	87	8	0
7	135.0° - 157.5°	86	4	-6
8	157.5° - 180.0°	89	0	-6
9	180.0° - 202.5°	92	-2	-1
10	202.5° - 225.0°	89	-3	4
11	225.0° - 247.5°	84	0	10
12	247.5° - 270.0°	83	3	9
13	270.0° - 292.5°	92	7	-1
14	292.5° - 315.0°	83	5	-7
15	315.0° - 337.5°	87	5	-6
16	337.5° - 360.0°	85	0	-8

Model:Ecoled Neon 3D 30K
 Tester:Sergio Caneros
 Temperature:27Deg
 Manufacturer:Luz Negra S.L.

Number: 10.287
 Date:2024-11-21 09:59:10
 Humidity:35%
 Remarks:100cm de Neón